

SHARE:

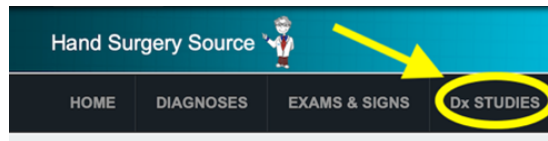
[Join Our Email List](#)



VOLUME 7, NUMBER 3

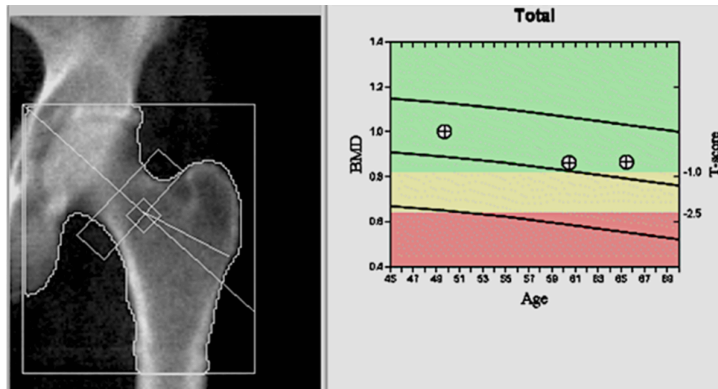
## DIAGNOSTIC STUDIES LIBRARY

Have you checked out the *Diagnostic Studies Library* at Hand Surgery Resource?



The Diagnostic Study Library has numerous chapters on imaging and investigative studies that support hand surgery related diagnoses. For example, check out the DEXA SCAN chapter!

| Diagnostic Studies                                |   |
|---|---|
| ARTHROSCOPY DIAGNOSTIC                            | NUCLEAR RADIOLOGY - BONE SCAN                             |
| COLD PRESSOR TEST                                 | RADIOLOGY STUDIES - ANGIOGRAM                             |
| COMPARTMENT PRESSURE MONITORING                   | RADIOLOGY STUDIES - ARTHROGRAM                            |
| DIAGNOSTIC LOCAL BLOCK                            | RADIOLOGY STUDIES - COMPUTERIZED TOMOGRAPHY (CT) SCANNING |
| DIGITAL PLETHYMOGRAPHY                            | <b>RADIOLOGY STUDIES - DEXA SCAN</b>                      |
| ELECTROPHYSIOLOGICAL TESTING - EMG/NCV            | RADIOLOGY STUDIES - FLUOROSCOPY                           |
| LABORATORY STUDY - BIOPSY FOR PATHOLOGICAL REVIEW | RADIOLOGY STUDIES - MYELOGRAM                             |
| LABORATORY TESTS - BLOOD TESTS                    | RADIOLOGY STUDIES - PET SCAN                              |
| LABORATORY TESTS - CULTURE                        | RADIOLOGY STUDIES - STRESS X-RAYS                         |
| MAGNETIC RESONANCE IMAGING - ARTHROGRAM           | RADIOLOGY STUDIES - X-RAY                                 |
| MAGNETIC RESONANCE IMAGING - MRI WITH CONTRAST    | SONOGRAPHIC STUDIES - DOPPLER                             |
| MAGNETIC RESONANCE IMAGING - MRI WITHOUT CONTRAST | SONOGRAPHIC STUDIES - ULTRASOUND                          |
| NEEDLE ASPIRATION AND/OR BIOPSY                   |   |



Here the **DEXA Scan** is in normal range. Bone mineral density is usually calculated from the lumbar spine and femur.

SIGN IN OR REGISTER

## HAND SURGERY RESOURCE IS EXPANDING!

Hand Surgery Resource app had users from **114 countries** during the last month, with our most recent users now in **Greenland!** Hand Surgery Resource is rapidly closing in on **22,000 USERS** worldwide!

